

AGTA PRISM

AMERICAN GEM SOCIETY JOURNAL VOL 1 - 2015



Ming-Na Wen

The 2015 Leon Ritzler
Honorary Member Award

Spring 2015 – Hushed Hues
Statement Making Designs

2015 AGTA
Spectrum™ Awards

Profile: Ming-Na Wen

2015 Color Forecast

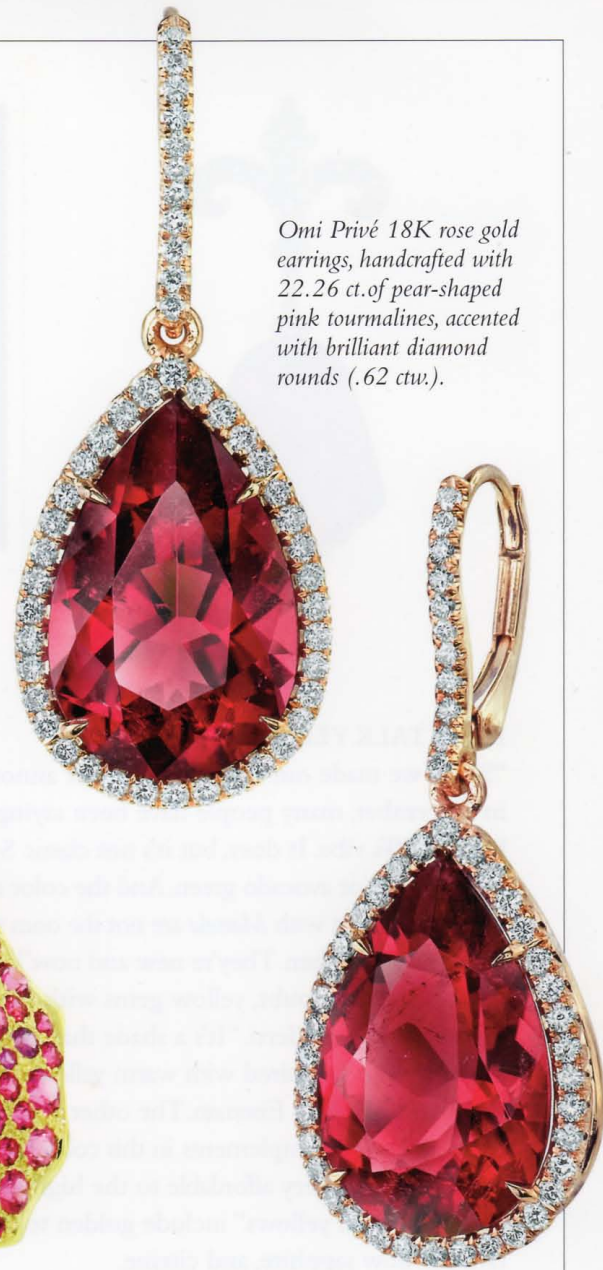
MEMBER PROFILE
Katey Brunini – K. Brunini

Prism Focus on
Chrysoprase Chalcedony

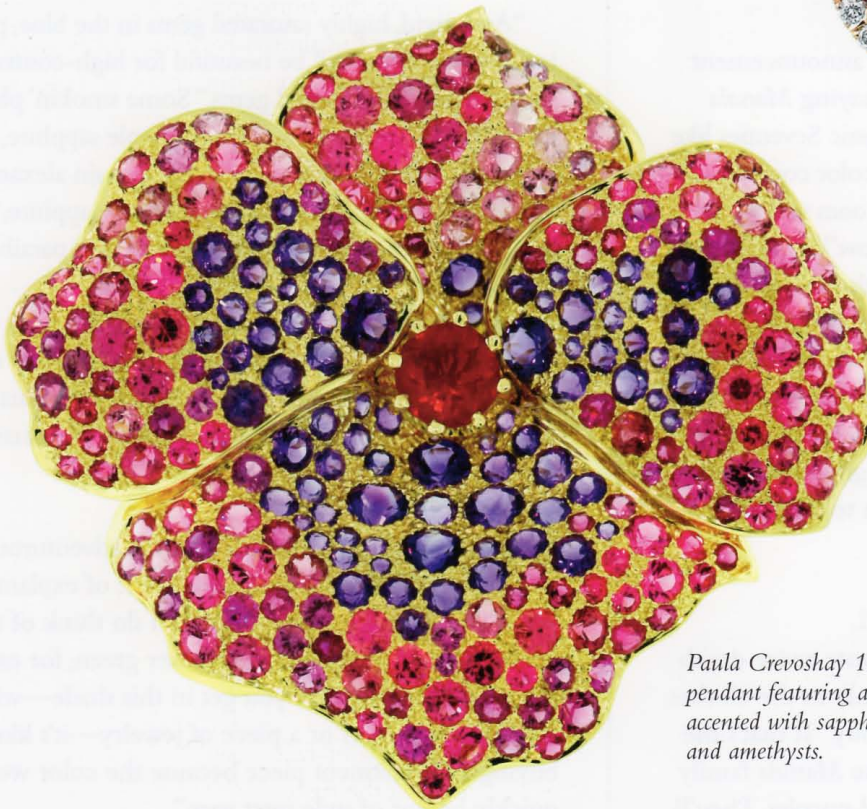
FIRM PROFILE
John Buechner



Zaffiro Satellite Series ring from the "Chiara Collection" featuring ruby center stone, bezel-set white diamonds, platinum shank and granulation, and 22K yellow gold and granulation.



Omi Privé 18K rose gold earrings, handcrafted with 22.26 ct. of pear-shaped pink tourmalines, accented with brilliant diamond rounds (.62 ctw.).



Paula Crevoshay 18K gold "Love Messenger" pendant featuring a 1.04 ct. Mexican fire opal accented with sapphires, spinels, tourmalines and amethysts.



Jane Taylor rings from the "Rosebud Collection" both featuring pink spinel in 14K yellow gold (top), in 14K blackened white gold (bottom).



Pamela Huizenga Jewelry, 18K yellow gold ring set with a 36.02 ct. rubellite and round and marquise diamonds (1.16 ctw.).