



LETTER  MATRIX

usa GAMES

Your favorite word game has gone M-O-B-I-L-E

DOWNLOAD NOW FREE AT THE APP STORE



WHITECOLLAR

ALL NEW EPISODES RETURN THIS WINTER

THE SHOW ▾ VIDEO ▾ PHOTOS ▾ GAMES ▾ QUIZZES ▾ FEATURES ▾ COMMUNITY ▾ STORE ▾ WC SOCIETY



CHARACTERS



WATCH FULL EPISODES

▶ PLAY NOW

UPCOMING EPISODES

▲ LATEST CHATTER

WHAT'S NEW!

WHITECOLLAR

AGENT EXPLORER VS CON EXPLORER

PLAY GAMES AND TRIVIA TO SEE WHICH SIDE OF THE LAW SUITS YOU BEST

Are you more of a Con or a G-man? Play Con Agent Explorer now!



WHITE COLLAR RETURNS THIS WINTER!

Does Neal get caught with the treasure? Will Mozzie leave Neal

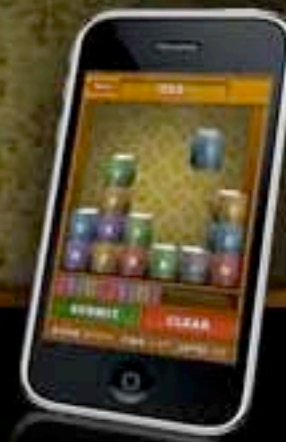


LETTER MATRIX

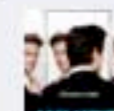
usa GAMES

Your favorite word game has gone M-O-B-I-L-E

DOWNLOAD NOW FREE AT THE APP STORE



COMMUNITY



White Collar

Like

1,181,052

EPISODE ARCHIVE

SEASON 3

SEASON 2

WITHDRAWAL

NEED TO KNOW

COPYCAT CAFFREY

BY THE BOOK

UNFINISHED BUSINESS

IN THE RED

PRISONER'S DILEMMA

COMPANY MAN

POINT BLANK

BURKE'S SEVEN

FORGING BONDS

WHAT HAPPENS IN BURMA...

COUNTERMEASURES

PAYBACK

POWER PLAY

UNDER THE RADAR

SEASON 1

EPISODE SEARCH

► SUBMIT



► [VIEW EPISODE GALLERY](#)

WHAT HAPPENS IN BURMA... (#WC212)

EPISODE PREMIERE: February 1, 2011

LOGLINE:

When the son of an American diplomat is detained in Burma for a crime he didn't commit, Peter and Neal delve into the exotic but dangerous world of jewelry smuggling to prove his innocence.

SYNOPSIS:

Neal and Peter are surprised when the Undersecretary of Asian Affairs asks for their help in an international matter. It seems an American college student named Christopher Harlowe is being held in a Burmese prison, accused of attempting to smuggle a "pigeon blood" ruby out of Burma. The State Department thinks the charges are trumped up, but relations with the Burmese government are tenuous. The only way to free Christopher will be to find the real smuggler, who may be in Manhattan. But Neal and Peter will have to work quickly; Christopher is due for sentencing in one week, and once the decision is handed down it will be nearly impossible to overturn.

It doesn't take long for Neal to locate the dealer selling the smuggled stone. Under pressure from Peter, the dealer holds a trunk show of exquisite gems, including another pigeon blood fabricated by Neal and Mozzie. Sure enough, the smuggler shows, and when the team takes him into custody he confirms their suspicions - he's never seen Christopher in his life.

Eager to get Christopher released, the FBI turns the smuggler over to the Burmese ambassador. However, under the ambassador's influence, the smuggler changes his story and names Christopher as his accomplice! It seems the Burmese government is determined to make an example of Christopher. And with no jurisdictional powers, Neal and Peter are going to have to get creative if they want to bring Christopher home.

Advertisement

It's TIME to
fight back.

Join Us

creativeamerica
UNITED TO FIGHT CONTENT THEFT

No Celebrity Endorsement Implied



Barbara Bui top, Yigal Azrouel skirt, Sigerson Morrison booties, Ray Griffiths gold cloverleaf lace bracelet, Zaffiro gold chain bracelet, gold, diamond and ruby earrings, gold, opal and diamond ring, gold, sapphire and diamond ring





Barbara Bui dress, Erica Molinari gold, steel and diamond bangles, Zaffiro gold, moonstone, sapphire and diamond ring, platinum, zircon, pearl and garnet brooch, and gold, peridot and diamond earrings



